

## LanSchool Tech Console v7.6

### Desktop Management and Technology Utilization for PCs and Macs

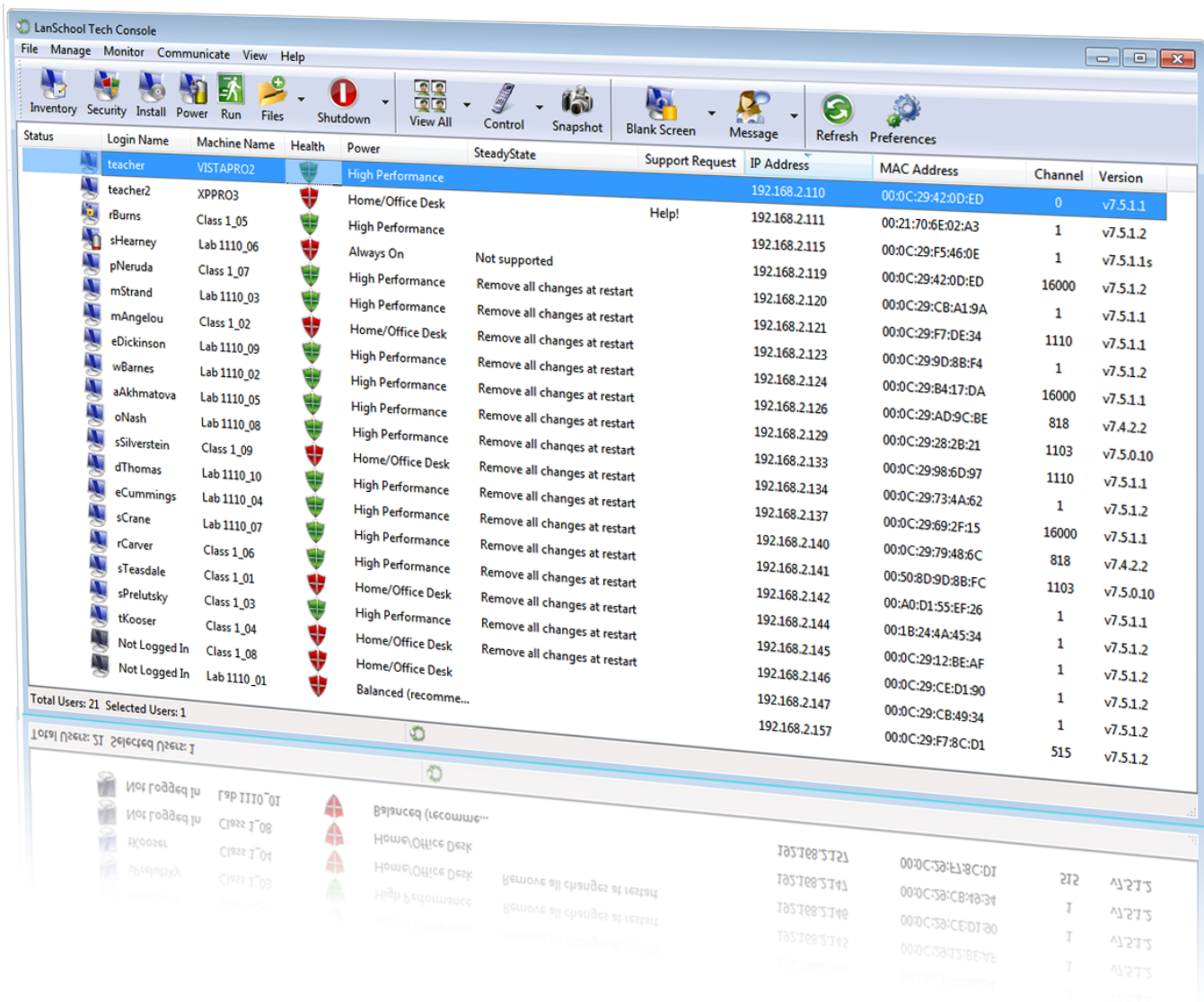
As a Tech Coordinator or ICT Manager, you're probably feeling budget pressures and continually asked to do more.

LanSchool Tech Console v7.6 allows techs to monitor security risks, keep everything up-to-date, provide support, save power and keep track of technology utilization.

The Tech Console will make your life easier by making hard tasks simple.

LanSchool Tech Console v7.6 allows techs to:

- View and enable security profiles
- View and enable patch management for the OS
- Distribute software over the network
- View hardware and software inventory
- Control Windows™ SteadyState® disk protection remotely
- Provide support through Remote Control and Chat
- Save power by viewing and setting power profiles
- Report on technology usage (web and applications)
- Prevent cyber-bullying and monitor computer use
- Send out school-wide emergency messages
- Receive support requests
- Send and retrieve files
- Remotely login computers



# Key Features

## LanSchool Tech Console

- Supports Windows and Mac computers
- 250 computers per channel, 3000 total computers
- View computers in a thumbnail or details view
- Manages teacher computers (with permission)

## Security Profiles

- View status and set security parameters for the Network Firewall, Virus Protection, Malware/Spyware, Internet Security Settings, User Account Control

## OS Patch Management

- View and enable automatic OS updates

## Software Distribution

- Remotely install, uninstall and update MSI, .exe and .pkg files
- Accepts command-line parameters
- Returns installation exit codes

## Windows SteadyState Console

- View status of the SteadyState disk protection
- Remotely enable the SteadyState disk protection

## Power Profiles

- Save power by viewing and enabling OS power profiles

## Monitoring

- View up to 3000 high color student thumbnails at the same time
- Retrieve Internet, Keystroke and Application history
- Battery monitoring alerts on low and critical battery states
- Watch the active application and web sites
- Teachers and administrators are excluded

## Remote Support

- Help teachers, administrators or students by taking control of their computer monitor, keyboard and mouse (permission required for teachers and administrators)
- Remote control multiple computers at the same time
- Chat with teachers and students that need technical support

## Inventory and Technology Utilization Reporting

- Intranet-based web reporting tool
- Report on web and application usage
- Report on software and hardware inventory data

## Emergency Messaging/Blank Screens

- Lockout and send a message to all computers in case of school wide emergencies

## Send a Message

- Send a text message to all or selected computers

## Application and Keystroke Monitoring

- Monitor applications and keystrokes on student computers
- Alert the tech when a student types banned words

## Send and Retrieve Files

- Send and retrieve files to and from computers

## Power/Admin Features

- Shutdown, logoff or restart computers
- Power on computers remotely using Wake-on-LAN
- Remotely login Windows computers

## Running Applications

- View all running applications on a computer and immediately terminate an application

## Screen Snapshot

- Take a snapshot of a student's current computer screen

## Security

- Active Directory-based secure mode
- Password-based secure mode
- Security Monitoring tool logs all LanSchool activity

## Works with LanSchool v7.6 Classroom Management Software

- Leverages the same teacher and student as LanSchool v7.6 Classroom Management Software.

If you deploy the LanSchool Tech Console v7.6 and your teachers wish to purchase and use LanSchool v7.6 Classroom Management Software, the teacher console install is all that is required.

## Teacher and Student Remote Update

- Upgrade LanSchool student and teacher software from the Tech Console

## Anti-Tampering Controls

- Prevents students from unloading or disrupting the software

## SYSTEM REQUIREMENTS

LanSchool Tech Console v7.6 supports any combination of computers running Windows XP-32, Windows Vista-32/64, Windows 7-32/64, and Mac OS 10.4 and higher.

The only exception is the LanSchool Tech Console for the Mac, which will only run on Intel-based Mac hardware running OS 10.5 and higher.

### TEACHER/STUDENT RAM

- 128 MB for Windows XP
- 256 MB for Windows Vista/7
- 512 MB for Mac OS X

### TEACHER/STUDENT PROCESSOR

166 MHz Intel® Pentium® processor or faster

### REPORTING SERVER COMPUTER

- Window XP or higher
- 1 GB RAM (minimum)

### PROTOCOL STACK

- All computers must be configured with TCP/IP
- 802.11 wireless is supported, however enterprise class access points are recommended



Stoneware, Inc.  
PO Box 3352  
Carmel, IN 46082

888-473-9485 [toll free]  
860-819-3774 [international]  
866-596-2088 [US fax]  
317-229-6320 [international fax]

sales@stone-ware.com  
<http://www.lanschool.com/contact-us>